

SLB 2/2-way High (Low) Temperature Solenoid Valve • Normally Closed

- SLB series solenoid valve it is serialized products, large flow rate, good applicability, widely used in steam, oil and the other high & low temperature liquid control.
- Adopted high temperature resistance seal material-PTFE (which material import), when the media passage the properties is good.
- Coils type: high temperature resistance coil meanwhile has the heat conduction protection.
- Ensure the long life time and high reliability.



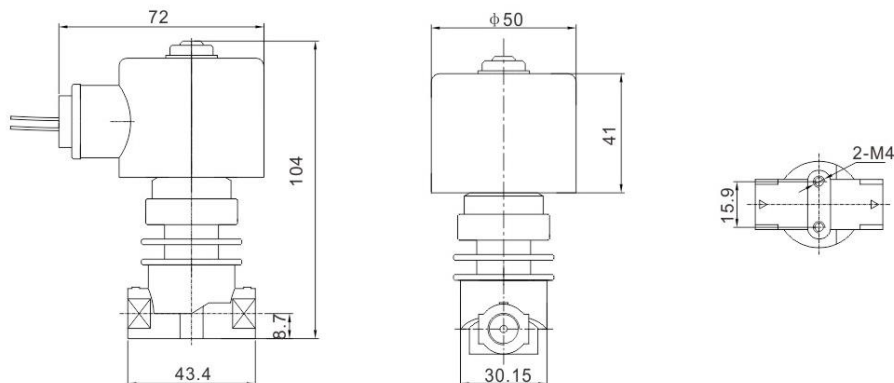
Main Technical Parameters

1. 2/2-way solenoid valve, closed when de-energized, open when energized.
2. Main material: body: forged brass component: stainless steel
3. Seal material: teflon
4. Ambient temp.: -20~65°C
5. Operating pressure: 0.0~50.0 kgf/cm²
6. Media temp.: low temp.: -100°C~-10°C high temp.: 99°C~200°C
7. Media: high temperature: steam, heat conducting oil and so on
low temperature: n₂, o₂, co₂
attention: under the nature temperature, such as air, water and the other media, please choose the other economy & suitable solenoid valve.
8. Voltage: ac24v/110v/240v/230v 50/60hz dc12v/24v
power consumption: ac27va (16w) dc24w
voltage tolerance: -10%~+10%
coils type: w (normal) a=din standard, metallic housing
safty series: class h heat resistance coil, ip 65
9. Install: flow as the arrow, solenoid vertical and upright direction. if media has the granule impurity, please install more than 60 mesh filter.

Normally Closed



External Dimensions



Sanlixin Solenoid Valve

SLB 2/2-way High (Low) Temperature Solenoid Valve • Normally Closed

Valve Slection List

Connection	Orifice (mm)	CV Factor	Operating Pressure kgf/cm ²			Fluid temp		Coil Type	Model Code AC220V TEFLON+Forged Brass	N.W. (Kg)
			Min	Max		Low Temp °C	Steam °C			
				Low Temp	Steam					
1/8"	1.5	0.08	0	50	30	-100~ -10	99~200	W	SLB1WH02T1AC2	0.6
1/8"	2.0	0.14	0	30	20	-100~ -10	99~200	W	SLB1WH02T1A02	0.6
1/8"	2.5	0.23	0	17	17	-100~ -10	99~200	W	SLB1WH02T1AC3	0.6
1/8"	3.0	0.3	0	13	13	-100~ -10	99~200	W	SLB1WH02T1A03	0.6
1/8"	4.0	0.6	0	7	7	-100~ -10	99~200	W	SLB1WH02T1A04	0.6
1/4"	1.5	0.08	0	50	30	-100~ -10	99~200	W	SLB1WH02T1BC2	0.6
1/4"	2.0	0.14	0	30	20	-100~ -10	99~200	W	SLB1WH02T1B02	0.6
1/4"	2.5	0.23	0	17	17	-100~ -10	99~200	W	SLB1WH02T1BC3	0.6
1/4"	3.0	0.3	0	13	13	-100~ -10	99~200	W	SLB1WH02T1B03	0.6
3/8"	4.0	0.6	0	7	7	-100~ -10	99~200	W	SLB1WH02T1C04	0.7
3/8"	5.0	0.65	0	5	5	-100~ -10	99~200	W	SLB1WH02T1C05	0.7
3/8"	6.0	0.8	0	4	4	-100~ -10	99~200	W	SLB1WH02T1C06	0.7
1/2"	5.0	0.65	0	5	5	-100~ -10	99~200	W	SLB1WH02T1D05	0.7
1/2"	6.0	0.8	0	4	4	-100~ -10	99~200	W	SLB1WH02T1D06	0.7

Solenoid Valve Numbering System for Order

	1	2	3	4	5	6	7	8
	Valve Series	Mode of Operation	Coil Type	Voltage	Seal Material Body Material	Pipe Size	Orifice	Options
E.G.	SLB	1	W H	02	T1	B	02	
		1= Normally Closed 2= Normally Open	W=Metallic Housing Lead Wires H CLASS A=DIN Standard Connections H CLASS	02=AC220V 01=AC110V 08=AC380V 12=DC12V 13=DC24V	T= Teflon 1= Forged Brass 4=SS304	A=1/8" B=1/4" C=3/8" D=1/2"	C2=1.5 02=2.0 C3=2.5 03=3.0 04=4.0 05=5.0 C2=1.5 02=2.0 C3=2.5 03=3.0 04=4.0 05=5.0 05=5.0 06=6.0 05=5.0 06=6.0	N=NPT Thread

SLB 2/2-way High (Low) Temperature Solenoid Valve • Normally Closed

- SLB Series solenoid valve it is serialized products, large flow rate, good applicability. Widely used in steam, oil and the other high & low temperature liquid control.
- Adopted high temperature resistance seal material- PTFE (which material is import), when the media passage the properties is good.
- Coils type: high temperature resistance coil meanwhile has the heat conduction protection.
- Ensure the long life time and high reliability.
- Main Technical Parameters



Main Technical Parameters

1. 2/2-Way solenoid valve, Closed when de-energized, open when energized.
2. main material: body: forged brass component: stainless steel
3. Seal Material: TEFLON
4. Ambient Temp.: -20~65°C
5. Operating Pressure: 1.0~10.0kgf/cm² Max.: 15.0kgf/cm²
6. media Temp.: low Temp.: -100°C~-10°C high Temp.: 99°C~185°C
7. media: high temperature: steam, heat conducting oil and so on
low temperature: N₂, O₂, CO₂
Attention: Under the nature temperature, such as air, water and the other media, please choose the other economy & suitable solenoid valve.
8. Voltage: AC24V/110V/240V/230V 50/60HZ DC12V/24V
Power Consumption: AC27VA (16W) DC24W
Voltage Tolerance: -10%~+10%
Coils type: W (Normal)=Lead Wires A=DIN Standard, Metallic Housing
Safety Series: Class H Heat resistance coil, IP 65
9. Install: Flow as the arrow, solenoid vertical and upright direction. If media has the granule impurity, please install more than 60 mesh filter.

Solenoid Valve Numbering System for Order

	1	2	3	4	5	6	7	8
	Valve Series	Mode of Operation	Normally Closed	Voltage	Seal Material & Body Material	Pipe Size	Orifice	Options
E.G.	SLB	1	WH	02	T1	E	20	
		1= Normally Closed 2= Normally Open	W=Metallic Housing Lead Wires H CLASS A=DIN Standard Connections H CLASS	02=AC220V 01=AC110V 08=AC380V 12=DC12V 13=DC24V	T= Teflon 1=Forged Brass 4=SS304	C=3/8" D=1/2" E=3/4" G=1" H=1 1/4" J=1 1/2" F=Flange	10=10.0 13=13.0 10=10.0 13=13.0 20=20.0 25=25.0 32=32.0 40=40.0 25=DN25 32=DN32 40=DN40	N= NPT Thread

Sanlixin Solenoid Valve

SLB 2/2-way High (Low) Temperature Solenoid Valve · Normally Closed

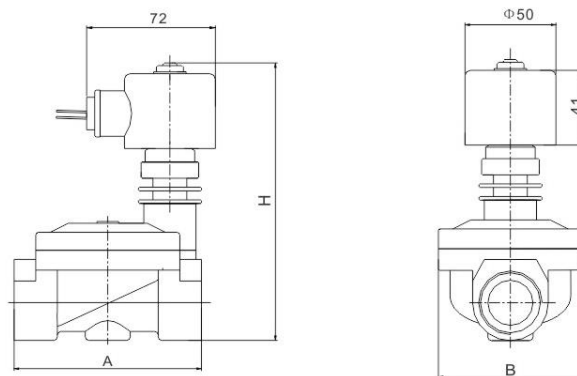
valve selection list

Pipe Size	Orifice (mm)	CV Factor	Operating Pressure kgf/cm ²			Fluid temp°C		Coil Type	External Size mm			Model Code AC220V	Weight (KG)
			Min	Max		Low Temp	Steam		A	B	C		
				Low Temp	Steam								
3/8"	13	4.2	1	15	10	-80~-10	99~185	W	75	52	136	SLB1WH02T1C13	1.1
1/2"	13	4.2	1	15	10	-80~-10	99~185	W	75	52	136	SLB1WH02T1D13	1.1
3/4"	20	7.3	1	15	10	-80~-10	99~185	W	80	58	141	SLB1WH02T1E20	1.2
1"	25	11.5	1	15	10	-80~-10	99~185	W	104	80	152	SLB1WH02T1G25	1.7
1 1/4"	32	22.0	1	15	10	-80~-10	99~185	W	130	92	173	SLB1WH02T1H32	3.1
1 1/2"	40	29.0	1	15	10	-80~-10	99~185	W	130	90	173	SLB1WH02T1J40	3.0

Normally Closed



External Dimensions

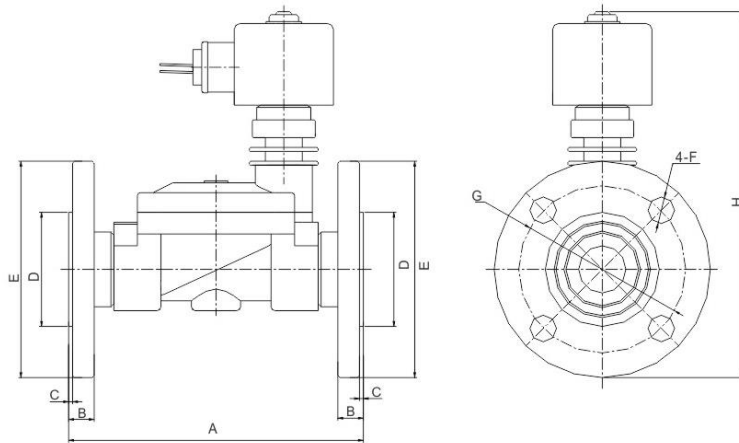


SLB 2/2-way High (Low) Temperature Solenoid Valve • Normally Closed

valve selection list (Flange Connection)

Orifice (mm)	CV Factor	Operating Pressure kgf/cm ²			Fluid temp °C		Coil Type	Model Code AC220V	Weight (KG)
		Min	Max		Low Temp	Steam			
			Low Temp	Steam					
25	11.5	1	15	10	-80~-10	99 ~ 185	W	SLB1WH02T1F25	1.6
32	22.0	1	15	10	-80~-10	99 ~ 185	W	SLB1WH02T1F32	2.9
40	29.0	1	15	10	-80~-10	99 ~ 185	W	SLB1WH02T1F40	2.9

External Dimensions (Flange)



Model	A	B	C	φ D	φ E	φ F	φ G	H
SLB-25F	150	13	2	58	110	14	85	176
SLB-32F	180	15	2	76	135	18	100	220
SLB-40F	180	15	2	84	145	18	110	225

Sanlixin Solenoid Valve

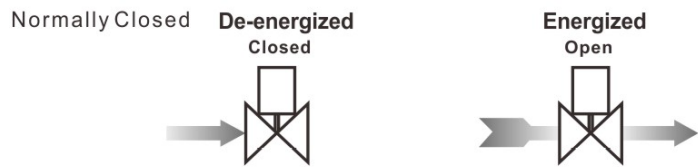
ZCT 2/2-Way Series Solenoid Valve • Normally Closed

Solenoid Valves Numbering System for Order

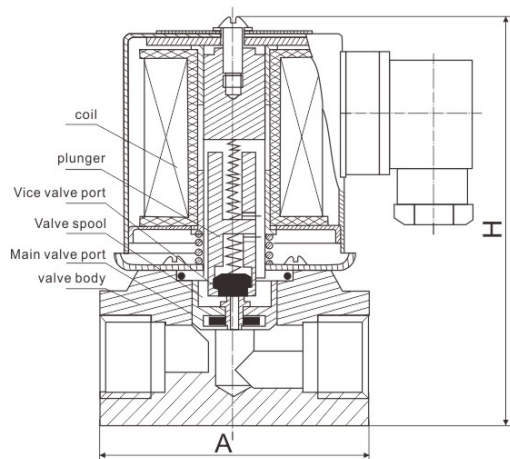
Position description	1	2	3	4	5	6	7	8	9	10
	Valve Series	Mode of Operation	Coil Type	Coil Class	Voltage	Seals Material	Body Material	Pipe Size	Orifice (φ mm)	Options
E.G.	ZCT	1	A	H	02	V	5	D	10	<input type="checkbox"/>
	ZCT Series	1: Normally Closed	A: Metallic Housing, DIN Standard D: DIN Standard Connections, Fully Encapsulated (for orifice φ 3mm only) S: NASS Coil	F:F class H:H class	02=220VAC 230VAC 50/60HZ 01=110VAC 120VAC 50/60HZ 13=DC24V 12=DC12V Contact the Company for other voltage	V: VITON T: Teflon	5=Stainless Steel 10=PMMA	A=1/8" B=1/4" B=1/4" C=3/8" C=3/8" D=1/2" D=1/2" E=3/4" G=1" A=1/8" B=1/4" C=3/8" D=1/2" D=1/2" E=3/4"	03=3.0 04=4.0 06=6.0 10=10. 15=15. 03=3.0 06=6.0 10=10. 15=15.	L: Neon Lamp N: NPT Connection

ZCT 2/2-Way Series Solenoid Valve • Normally Closed

- 1:** 2-Way normally closed solenoid valve; Closed when de-energized, open when energized.
- 2:** Body material: stainless steel and Plexiglas (standard), brass (special made)
- 3:** Max. Allowable pressure 12kgf/cm²;
Ambient Temp. 0°C~65°C (F CLASS) , 0°C~80°C (H CLASS)
- 4:** Flow as the arrow, mounts in any position;
Best position is Solenoid vertical and upright direction.
- 5:** Voltage: 220VAC/230VAC/240VAC/110VAC/24VAC 50/60HZ
24VDC/12V; Voltage Tolerance: +10% to -10% applicable voltage
- 6:** Coil can fix Germany NASS Coil, for the orifice is 3mm only,
Standard voltage: 220VAC 50/60HZ 24VDC
- 7:** This series valves are offered VITON for Seals



Construction, External Dimensions Chart



Sanlixin Solenoid Valve

ZCT 2/2-Way Series Solenoid Valve • Normally Closed

Valve Selection List

Pipe Conn- ection	Orifice mm	CV Factor	Operating pressure differential (kgf/cm ²)								Max. Fluids Temp.	Coil Type	Power consumption		Coil Class	External Dimensions Length xWidth x Height A x B x H	Model Code Follows Voltage are 220VAC 50/60HZ	Weight (KG)
			Min.	Max.									VA AC 220 V	W DC 24 V				
				Air Gas		Water Hot water Liquids		Light oil		Steam								
				AC	DC	AC	DC	AC	DC									
1/8"	3	0.23	0	13	10	13	10	10	7	3	130	D	22	13	F	36×36×82	ZCT1DF02V5A03	0.36
1/4"	3	0.23	0	13	10	13	10	10	7	3	130	D	22	13	F	36×36×82	ZCT1DF02V5B03	0.36
	4	0.6	0	7	7	7	7	5	5	3	130	D	22	13	F	50×30×82	ZCT1DF02V5B04	0.8
3/8"	4	0.6	0	7	7	7	7	5	5	3	130	D	22	13	F	50×30×82	ZCT1DF02V5C04	0.8
	6	0.9	0	6	6	6	6	6	6	5	155	A	19.8	12.5	H	50×30×82	ZCT1AH02V5C06	0.7
1/2"	6	0.9	0	6	6	6	6	6	6	5	155	A	19.8	12.5	H	50×30×82	ZCT1AH02V5D06	0.7
	10	1.5	0.1	10	10	10	10	7	7	5	155	A	19.8	22	H	70×38×110	ZCT1AH02V5D10	1.2
3/4"	15	4.5	0.1	10	10	10	10	7	7	5	155	A	19.8	22	H	80×40×115	ZCT1AH02V5E15	1.3
1"	15	4.5	0.1	10	10	10	10	7	7	5	155	A	19.8	22	H	80×40×115	ZCT1AH02V5G15	1.2

ZCT Series • 2/2-Way Plexiglas Solenoid Valve • Normally Closed

Valve Selection List

Pipe Conn- ection	Orifice mm	CV Factor	Operating pressure differential (kgf/cm ²)						Max. Fluids Temp.	Coil Type	Power consumption		Coil Class	External Dimensions Length xWidth x Height Lx W x H	Model Code Follows Voltage are 220VAC 50/60HZ	Weight (KG)
			Min.	Max.				VA AC 220 V			W DC 24 V					
				Air Gas		Water Hot water Liquids										
				AC	DC	AC	DC									
1/4"	6	0.6	0	6	6	6	6	80	D	33	32	F	50×30×82	ZCT1DF02V10B06	0.4	
3/8"	6	0.6	0	6	6	6	6	80	D	33	32	F	50×30×82	ZCT1DF02V10C06	0.4	
1/2"	6	0.6	0	6	6	6	6	80	D	33	32	F	50×30×80	ZCT1DF02V10D06	0.4	
1/2"	10	1.5	0.1	10	10	10	10	80	D	19.8	22	F	80×40×98	ZCT1DF02V10D10	0.55	
3/4"	15	4.5	0.1	10	10	10	10	80	D	19.8	22	F	80×40×98	ZCT1DF02V10E15	0.55	