

ZXF 2/2-way Solenoid Axial Valve · Normally Closed

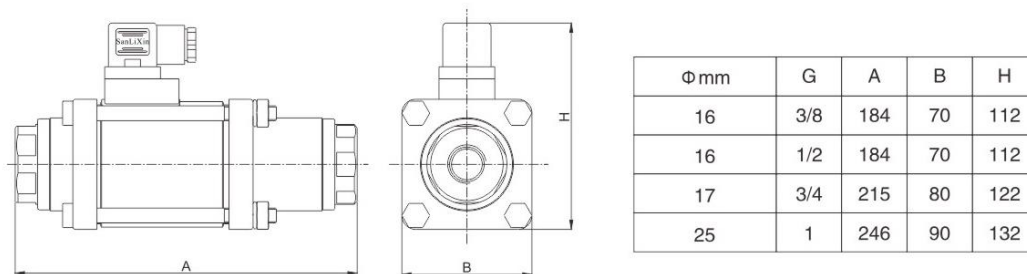
- 1: 2/2 way normally closed , closed when de-energized open , open when energized
- 2: Working pressure : 0 ~64 kgf/cm²
- 3: Ambient temp : 0~65 °C
- 4: Flow as the arrow ,mounts in any position ; best position is solenoid vertical and upright direction
- 5: Voltage : AC220V 50HZ DC24V +10%~-10%
- 6: Seals : PU
- 7: Body: Forged Brass、Stainless steel



Solenoid Axial Valve Numbering System for Order

1	2	3	4	5	6	7	8	9	10
Valve Series	Mode of Operation	Coil Type	Coils Class	Voltage	Seal Material	Body Material	Pipe Size	Orifice	Options
ZXF	1	A	H	02	P	1	D	16	<input type="checkbox"/>
	1= Normally Closed	A=Metallic Housing DIN standard	H=H Class	02=AC220V 13=DC24V	P=PU	1=Forged Brass 4=SS304	D=1/2" E=3/4" G=1"	16=16.0 17=17.0 25=25.0	L= Neon Lamp N=NPT

Configuration dimension chart



Valve Selection List

Pipe Size	Orifice mm	CV Factor	Operating pressure differential (kgf/cm ²)				Coil Type	Coil Class	Power		Max. Fluids Temp. °C	Model Code 220VAC		Weight KG	
			Min.	Max.					VA AC 220V	W DC 24V		Brass	Stainless steel		
				Air		Opposite pressure									
				AC	DC	AC						DC			
3/8"	16	5.5	0	64	64	16	16	A	H	50	50	120	ZXF1AH02P1C16	ZXF1AH02P4C16	3.5
1/2"	16	5.5	0	64	64	16	16	A	H	50	50	120	ZXF1AH02P1D16	ZXF1AH02P4D16	3.45
3/4"	17	7.5	0	64	64	16	16	A	H	50	50	120	ZXF1AH02P1E17	ZXF1AH02P4E17	5.3
1"	25	13	0	64	64	16	16	A	H	50	50	120	ZXF1AH02P1G25	—————	7.8