

SLC Series Water Dispenser Plastic Solenoid Valve · Normally Closed

SLC Water Valve

2-way normallyclosed, 1/8 & 1/4 pipe size,plastic valvebody

Specification

Direct acting, Normally closed
Response time: 6~20MSEL
Mounting: Solenoid vertical and upright direction. Fixing screw M5

Using

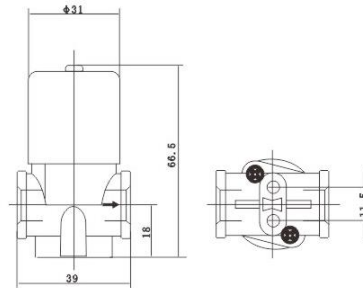
Fluid media: water
Fluids temp.:0°C ~ 100°C
Ambient temp.: -10°C ~ +40°C



Characteristics

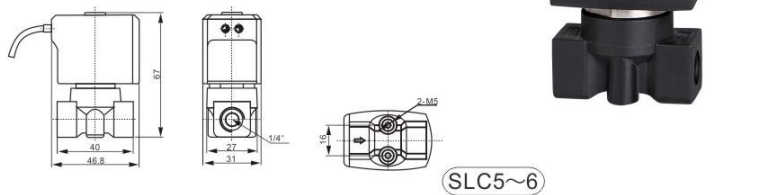
Power consumption: AC 6.8VA (Holding) DC 5W
Voltage: AC: 24V 110V 220V 50/60Hz, DC: 24V
Voltage Tolerance: -10%
Coil class: Class B 130
Duty cycle: 100%
lead length: 30 CM(12")

Construction, External Dimensions Chart



Component Material

Plunger: U117
Seals: EPDM
Body: PP, 1/8(black),1/4(white), nylon66
Shading Ring: red copper



Technical Parameter

Pipe size	Orifice	CV	Operating Pressure PSI			Model Code	Weight (KG)
			MIN	MAX-AC	MAX-DC		
1/8"	2.5(3/32)	0.21	0	120	120	SLC1	0.12
1/4"	2.5(3/32)	0.21	0	120	120	SLC2	
1/8"	3.0	0.23	0	100	100	SLC5	0.2
1/4"	3.0	0.23	0	100	100	SLC6	

Sanlixin Solenoid Valve

SLC Series Water Dispenser Plastic Solenoid Valve · Normally Closed

2-way normally closed.plastic Solenoid valve

Characteristics

special diaphragm for foods and separate type

Specification

Direct acting
Response time:10~50MSEL
Mounting: Solenoid vertical and upright direction.
Fixing screw M4 for SLC-3
Fixing screw M3 for SLC-4

Using

Fluid media: water
Fluids temp.:0℃~100℃
Ambient temp.: -10℃~ +40℃



Characteristics

Voltage: DC12V DC24V
Coil Class: CLASS B 110℃
lead length:30CM



Voltage tolerance

-10%~+10%

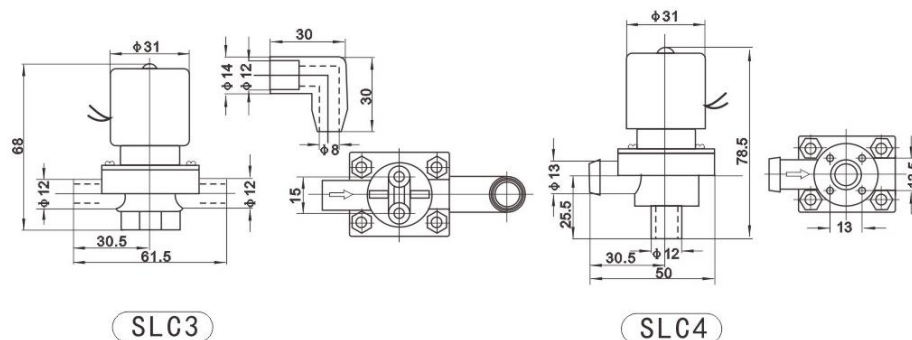
Technical Parameter

Model Code	Major diameter (insert port)	Orifice Water	Column mm	Weight (KG)
SLC3	12	8	600	0.14
SLC4	12	9	600	

Component Material

Plunger: IJ117
Seals: Silica Gel
Body: PP

Construction Dimensions Chart



SLC Series Water Dispenser Plastic Solenoid Valve · Normally Closed

Specification

Direct acting, Normally closed
Response time: 0-5 Msel
Upright direction, fixing screw M5

Using

Fluid media water
Fluid Temp: 0°C to -100°C
Ambient Temperature: -10°C to 40°C



SLC10

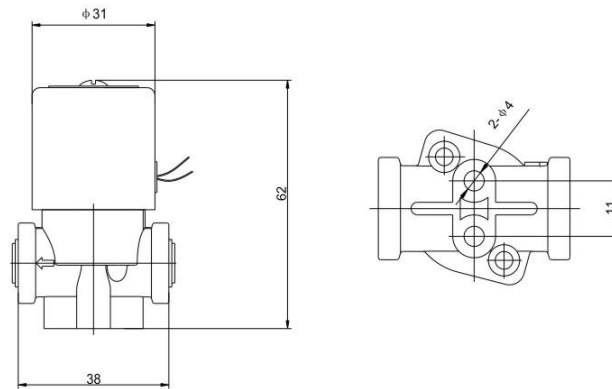
Characteristic

Power consumption: AC6.8VA(HOLD) DC5W
Voltage: AC24V 110V 220V, DC24V
Voltage Tolerance -10% to +10%
Coil Class: Class B 130
Duty cycle: 100%
Lead length: 30CM(12")

Component material

Plunger: Ij117
Seals: EPDM
Body Material: PP white
Shading Ring: Red copper

Construction, external dimensions chart



Technical Parameters

Quick connected pipe	Orifice	CV	Operating pressure			Model Code	Weight (KG)
			MIN	MAX-AC	MAX-DC		
R1/4"(φ6.35)	2.5 (3/32)	0.21	0	120	120	SLC10	0.12

Sanlixin Solenoid Valve

SLC Series Inlet Plastic Solenoid Valve · Normally Closed

This series solenoid valve used for RO machine, coffee machine.

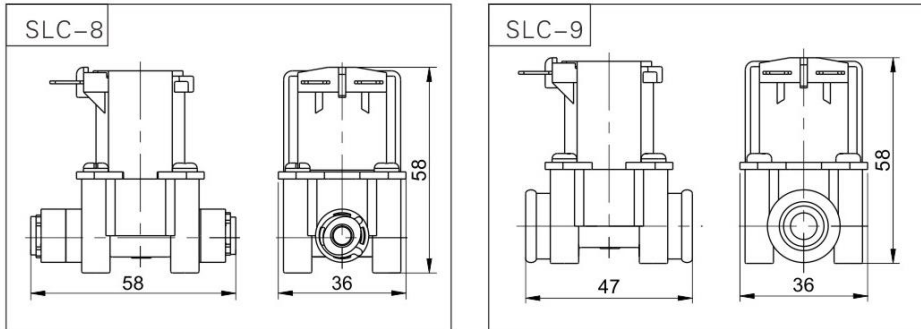
1. Fluid media: water
2. Voltage: DC12V、DC24V ±10% Voltage tolerance , 5.6W
3. Fluid temperature: 0~80℃
4. Ambient temperature: -10~+60℃
5. Working pressure: 0.2~8.0bar
6. Life cycle: More than 100000
7. Connection : NPT1/4" (PP quick connect 6.35mm)
8. Material : POM (PP Opotion)
9. Seal material: EPDM
10. Mounting distance 25×25mm



Technical parameters

Model Code	Orifice	Operating pressure (bar)		Connect	Weight (KG)
		MIN	MAX		
SLC-8	10mm	0.2	8.0	quick connect 1/4" (Φ6.35mm)	0.11
SLC-9	10mm	0.2	8.0	NPT1/4"	0.11

Construction, External Dimensions Chart



SLC Series Inlet Plastic Solenoid Valve · Normally Closed

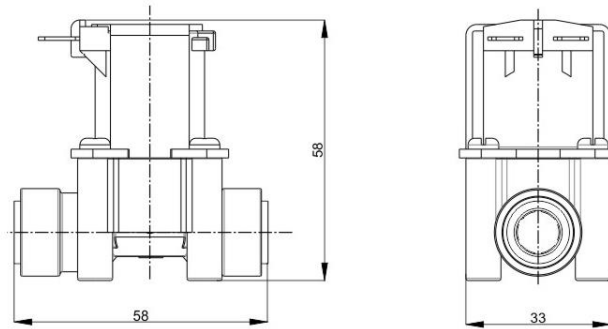
This series solenoid valve used for RO machine. coffee machine.

1. Fluid media: water
2. Voltage: DC12V、DC24V ±10% Voltage tolerance , 5.6W
3. Fluid temperature: 0~80°C
4. Ambient temperature: -10~+60°C
5. Working pressure: 0.2~8.0bar
6. Life cycle: More than 100000
7. Connection : 3/8" (quick connect 9.5mm)
8. Material : POM (PP Opetion)
9. Seal material: EPDM
10. Mounting distance 25×25mm



SLC15

Construction, External Dimensions Chart



Technical parameters

Model Code	Orifice	Operating pressure (bar)		Connect	Weight (KG)
		MIN	MAX		
SLC-15	10mm	0.2	8.0	quick connect 3/8" (Φ9.5mm)	0.13

Sanixin Solenoid Valve

SLC Series Inlet Plastic Solenoid Valve · Normally Closed

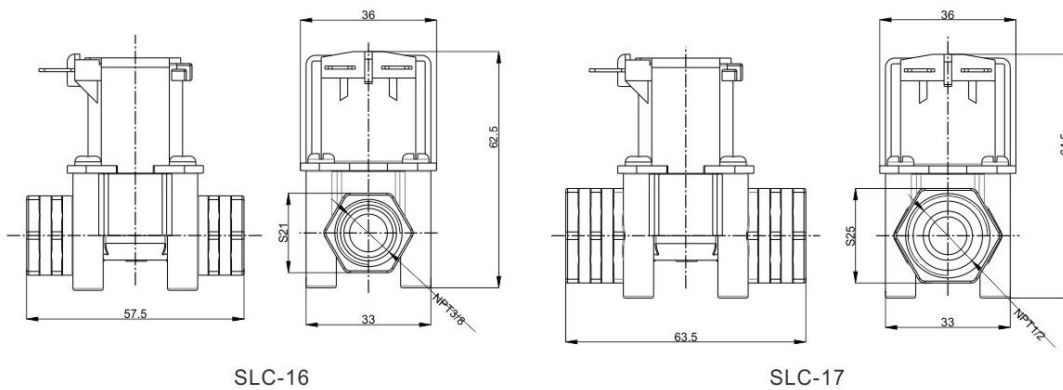
This series solenoid valve used for RO machine, coffee machine.

1. Fluid media: water
2. Voltage: DC12V、DC24V ±10% Voltage tolerance , 5.6W
3. Fluid temperature: 0~80℃
4. Ambient temperature: -10~+60℃
5. Working pressure: 0.2~8.0bar
6. Life cycle: More than 100000
7. Connection : NPT3/8" , NPT1/2"
8. Material : POM (PP Opetion)
9. Seal material: EPDM
10. Mounting distance 25×25mm



SLC16-17

Construction, External Dimensions Chart



Technical parameters

Model Code	Orifice	Operating pressure (bar)		Connect	Weight (KG)
		MIN	MAX		
SLC-16	10mm	0.2	8.0	NPT 3/8	0.11
SLC-17	10mm	0.2	8.0	NPT 1/2	0.12

SLC Series Inlet Plastic Solenoid Valve · Normally Closed

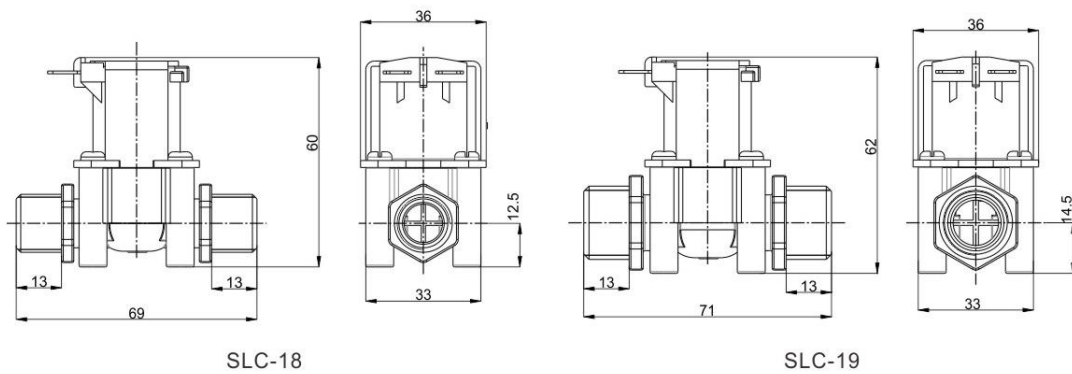
This series solenoid valve used for RO machine. coffee machine.

1. Fluid media: water
2. Voltage: DC12V、DC24V ±10% Voltage tolerance , 5.6W
3. Fluid temperature: 0~80°C
4. Ambient temperature: -10~+60°C
5. Working pressure: 0.2~8.0bar
6. Life cycle: More than 100000
7. Connection : G3/8" , G1/2"
8. Material : POM (PP Opetion)
9. Seal material: EPDM
10. Mounting distance 25×25mm



SLC18-19

Construction, External Dimensions Chart



Technical parameters

Model Code	Orifice	Operating pressure (bar)		Connect	Weight (KG)
		MIN	MAX		
SLC-18	10mm	0.2	8.0	G 3/8	0.11
SLC-19	10mm	0.2	8.0	G 1/2	0.12

Sanlixin Solenoid Valve

SLC Series Outlet Plastic Solenoid Valve • Normally Closed

This series solenoid valve used for RO machine. coffee machine.

1. Fluid media: water
2. Voltage: DC12V、DC24V ±10% Voltage tolerance , 8.5W
3. Fluid temperature: 0~100℃
4. Ambient temperature: -10~+60℃
5. Working pressure: 0~0.5PSI
6. Life cycle: More than 100000
7. Material : PES
8. Seal material: silicon

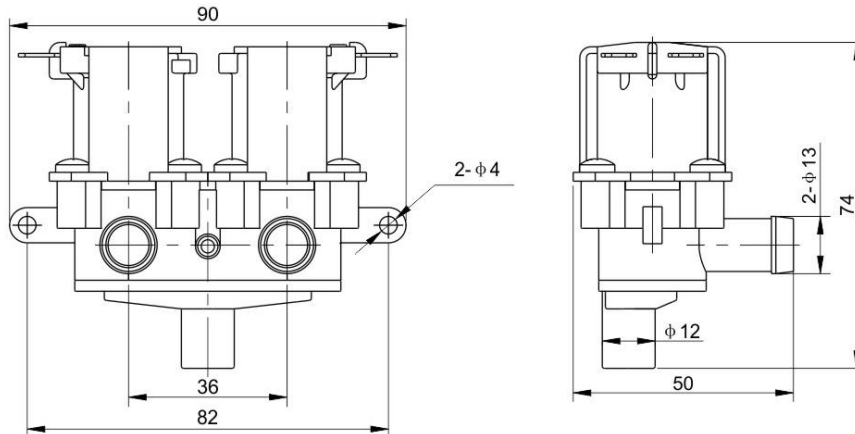


SLC12

Technical parameters

Model Code	Orifice	Operating pressure (bar)		Connect	Weight (KG)
		MIN	MAX		
SLC-12	10mm	0	0.5	inlet 2×Φ13, outletΦ12	0.22

Construction, External Dimensions Chart



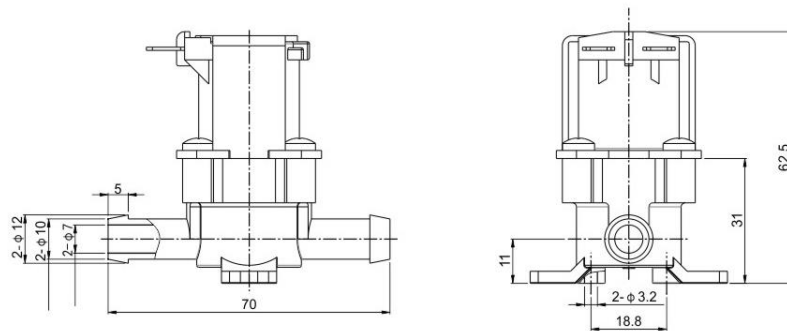
SLC Series Outlet Plastic Solenoid Valve · Normally Closed

This series solenoid valve used for RO machine, coffee machine.

1. Fluid media: water
2. Voltage: DC12V、DC24V ±10% Voltage tolerance , 8.5W
3. Fluid temperature: 0~100°C
4. Ambient temperature: -10~+60°C
5. Working pressure: 0~0.5PSI
6. Life cycle: More than 100000
7. Material: POM (PP Opetion)
8. Seal material: silicon



Technical parameters



Technical parameters

Model Code	Orifice	Operating pressure (bar)		Connect	Weight (KG)
		MIN	MAX		
SLC-13	10mm	0	0.5	inlet Φ12, outletΦ12	0.11

Sanlixin Solenoid Valve

SLC Series waste water Plastic Solenoid Valve-Normally Closed

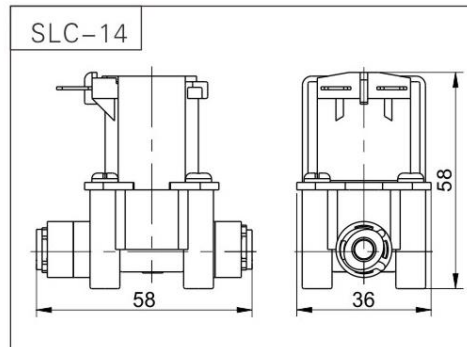
This series solenoid valve used for RO machine, coffee machine.

1. Fluid media: water
2. Voltage: DC12V、DC24V ±10% Voltage tolerance , 5.6W
3. Fluid temperature: 0~80℃
4. Ambient temperature: -10~+60℃
5. Working pressure: 0.2~8.0bar
6. Life cycle: More than 100000
7. Material: POM (PP Opetion)
8. Seal material: EPDM



SLC14

Technical parameters



Technical parameters

Model Code	Orifice	Operating pressure (bar)		Connect	Weight (KG)
		MIN	MAX		
SLC-14	10mm	0.2	8.0	quick connect 1/4" (Φ6.35mm)	0.11

Flow characteristics

Water Pressure	0.3Mpa	0.42Mpa
Flow rate	>3L/min	Waste water flow: 300 ± 10%ml/min

SLV Series 3/2-Way Direct Acting Solenoid Valve

SLV Series 3/2-way direct acting solenoid valve

SLV1 • Normally Closed;

SLV2 • Normally Open

SLV3 • Diverting;

SLV4 • Universal

SLV5 • Free Exhaust



Body Type: 1 & 3

Solenoid Valves Numbering System for Order

Position description	1	2	3	4	5	6	7	8	9	10
	Valve Series	Mode of Operation	Coil Type	Coil Class	Voltage	Seal Material	Body Material	Pipe Size	Orifice (φ mm)	Options
E.G.	SLV	1	D	F	02	N	1	A	V3	
	SLV Series	1: Normally Closed 2: Normally Open 3: Diverting 4: Universal 5: Normally Closed (Free exhaust)	D: DIN Standard Connections, Fully Encapsulated (For Body type: Brass 1 S.S. 3) W: Metallic Housing, Lead wires (For Body type: Brass 2 S.S. 4) S: NASS Coil (For Body type: Brass 1 S.S. 3)	F: Class	02=220VAC 230VAC 50/60HZ 01=110VAC 120VAC 50/60HZ 05=24VAC 13=DC24V 12=DC12V Contact the Company for other voltage	V: VITON E: EPDM N: NBR	1= Brass 3=S.S Body 1&3 for D type Coil See Valve Selection List	A=1/8" B=1/4"	V1=1.5 × 1.2 V2=2.0 × 1.2 V3=2.5 × 1.2 V4=3.0 × 1.2	N =NPT Connection

Sanlixin Solenoid Valve

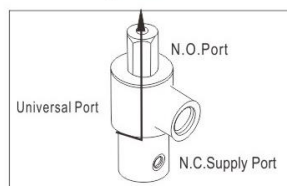
SLV Series 3/2-Way Direct Acting Solenoid Valve

SLV1 Normally closed type

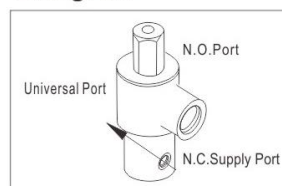
Pipe Conn- ection	Orifice mm		CV Factor		Operating pressure differential (kgf/cm ²)						Max. Fluids Temp.	Coil Type	Power consumption		Coil Class	Model Code Follows Voltage are 220VAC 50/60HZ		
					Min.	Max.			VA AC 220 V	W DC 24 V								
	Air Gas	Water Liquids		Light oil ≤20CST														
		Body	Top	Body	Top	AC	DC	AC	DC	AC			DC					Brass
1/8"	1.5	1.2	0.07	0.05	0	8	5	8	5	8	5	80	D	24	18.5	F	SLV1DF02N1AV1	SLV1DF02N3AV1
	2.0	1.2	0.14	0.05	0	6	5	6	5	6	5	80	D	24	18.5	F	SLV1DF02N1AV2	SLV1DF02N3AV2
	2.5	1.2	0.21	0.05	0	5	4	5	4	5	4	80	D	24	18.5	F	SLV1DF02N1AV3	SLV1DF02N3AV3
	3.0	1.2	0.23	0.05	0	4	3	4	3	4	3	80	D	24	18.5	F	SLV1DF02N1AV4	SLV1DF02N3AV4
1/4"	1.5	1.2	0.07	0.05	0	8	5	8	5	8	5	80	D	24	18.5	F	SLV1DF02N1BV1	SLV1DF02N3BV1
	2.0	1.2	0.14	0.05	0	6	5	6	5	6	5	80	D	24	18.5	F	SLV1DF02N1BV2	SLV1DF02N3BV2
	2.5	1.2	0.21	0.05	0	5	4	5	4	5	4	80	D	24	18.5	F	SLV1DF02N1BV3	SLV1DF02N3BV3
	3.0	1.2	0.23	0.05	0	4	3	4	3	4	3	80	D	24	18.5	F	SLV1DF02N1BV4	SLV1DF02N3BV4

Normally closed

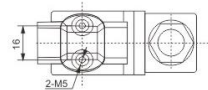
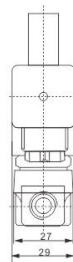
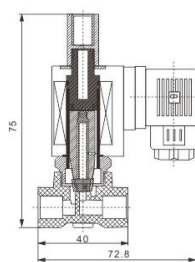
De-energized



Energized



Construction, External Dimensions Chart



1 & 3 Body Type

Body 1 N.W.=0.42KG
Body 3 N.W.=0.35KG

Sanlixin Solenoid Valve

SLJ Plate-Type, Integrated Series Solenoid Valve

SLJ1 Normally Closed 3/2-way Series

SLJ2 Normally Open 3/2-way Series

SLJ3 Universal 3/2-way Series

SLJ4 2/2-way Series

Product Characteristics

SLJ 3/2-way Series solenoid valve structure compact, Installed in integrated plate, Realize the piping to be not moved, Optional installation exchange solenoid valves, According to the requirement of customer mix of integration (At the same time,install 2/2-way and 3/2-way solenoid valve on one plate), This product widely used for cylinder、 valve etc implementation of the automatic control and air compressor.



9



1

Solenoid Valves Numbering System for Order

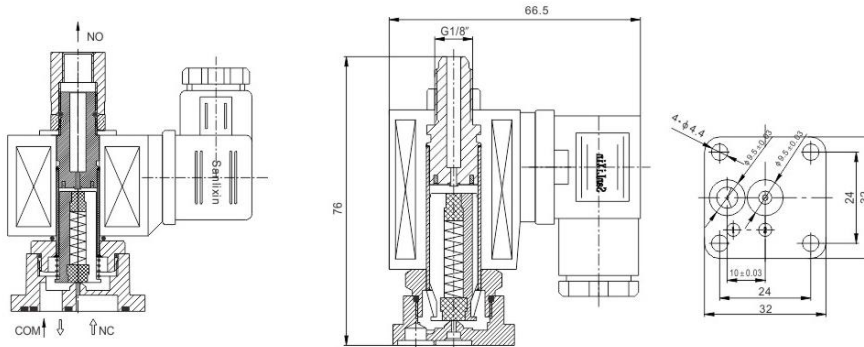
	1	2	3	4	5	6	7	8	9
	Valve Series	Mode of Operation	Coil Type	Coil Class	Voltage	Body Material	Pipe Size	Orifice (mm)	Options
E.G.	SLJ	1	D	F	02	N/1	J	C2	M
		1: Normally Closed 2: Normally Open 3: Universal 3/2-way Series 4: 2/2-way Series	D: DIN Standard Connections, Fully Encapsulated N: Lead Wires, Water-tight, Fully Encapsulated	F: Class	02= AC220V AC230V 50/60HZ 01= AC110V AC120V 50/60HZ 13= DC 24V	N=NBR V=VITON E=EPDM 1=Forged Brass 9=Forged Brass	J= Installe in integrated plate	C2=1.5 02=2.0 C3=2.5	L= Neon Lamp

SLJ Plate-Type, Integrated Series Solenoid Valve

SLJ1 Normally Closed 3/2-way Series Selection List

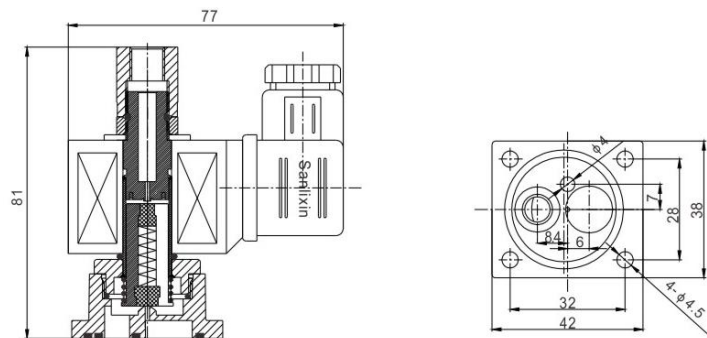
Orifice (mm)		CV Factor		Operating pressure differential (kgf/cm ²)								Coil Type	Power		Coil Class	Model Code Follows Voltage are AC220V 50/60HZ Brass	Weight (KG)
Valve body	Top	Valve body	Top	Min	Max.						AC 220V		DC 24 V				
					Air Gas		Water Liquids		Light oil ≤20CST								
					AC	DC	AC	DC	AC	DC							
1.2	1.5	0.05	0.05	0	16	16	16	16	16	16	D	33	20	F	SLJ1DF02N1JC1	0.31	
1.2	1.5	0.05	0.05	0	16	16	16	16	16	16	D	22	13	F	SLJ1DF02N9JC1	0.28	
1.5	1.5	0.07	0.05	0	10	8	10	8	10	8	D	16	13	F	SLJ1DF02N1JC2	0.31	
1.5	1.5	0.07	0.05	0	10	8	10	8	10	8	D	22	13	F	SLJ1DF02N9JC2	0.28	
2.0	1.5	0.14	0.05	0	7	5	7	5	7	5	D	16	13	F	SLJ1DF02N1J02	0.31	

De-energized & Energized-Flow Chart



Drawings Of Body 9

Configuration dimension chart(3/2-way)



Drawings of solenoid valve use 06-310 coils

SLM 2/2-way Direct Acting compact Series Solenoid Valve

Main Technical Parameters

2/2-way solenoid valve, Closed when de-energizes, open when energized.
 Serialized products, small in size. Large flow rate, widely use
 Body material: Brass
 Plunger tube material : Brass stainless steel
 Ambient temp: 0~65℃ fluid temp: 0~120℃
 Voltage: AC220v DC 24v/6W (other voltage can special made)
 Flow as the arrow, mounts in any position:
 best position is solenoid vertical and upright direction.
 This series valves are offered NBR VITON EPDM stc for series and diaphragm to provide on-off control of various fluids.



Solenoid Valve Numbering System for Order

	1	2	3	4	5	6	7	8	9	10
	Valve Series	Mode of Operation	Coil Type	Coils Class	Voltage	Seal Material	Body Material	Pipe Size	Orifice	Options
E.G.	SLM	1	D	H	02	N	1	A	C2	L
		1: Normally Closed	D: DIN Standard Connections, Fully Encapsulated	H: Class	02= AC220V AC230V 50/60HZ 01= AC110V AC120V 50/60HZ 13= DC24V	N= NBR V= VITON E= EPDM	1= Forged Brass 3= SS316	A= 1/8" B= 1/4" C=3/8" D=1/2" E=3/4" G=1"	01=1.0 C2=1.5 02=02 C3=2.5 12=12 20=20.0 25=25.0	L= Neon Lamp D=01-410 coils (according to the customer) N= NPT

Sanlixin Solenoid Valve

SLM 2/2-way Direct Acting compact Series Solenoid Valve

valve selection list

Pipe Size	Orifice (mm)	CV Factor	Working Pressure (bar)				Coil Type	Power		Coil Class	Model Code Follows Voltage are AC220V 50/60HZ		Weight (KG)	
			Min	Max		VA AC 220V		W DC 24V						
				Gas					Liquid					
				AC	DC				AC					DC
1/8"	1.0	0.05	0	20	15	20	15	D	6	6	H	SLM1DF02N1A01	SLM1DF02N3A01	0.13
	1.5	0.07	0	16	13	16	13	D	6	6	H	SLM1DF02N1AC2	SLM1DF02N3AC2	
	2.0	0.13	0	13	10	13	10	D	6	6	H	SLM1DF02N1A02	SLM1DF02N3A02	
	2.5	0.17	0	10	6	10	6	D	6	6	H	SLM1DF02N1AC3	SLM1DF02N3AC3	
1/4"	1.0	0.05	0	20	15	20	15	D	6	6	H	SLM1DF02N1B01	SLM1DF02N3B01	0.14
	1.5	0.07	0	16	13	16	13	D	6	6	H	SLM1DF02N1BC2	SLM1DF02N3BC2	
	2.0	0.13	0	13	10	13	10	D	6	6	H	SLM1DF02N1B02	SLM1DF02N3B02	
	2.5	0.17	0	10	6	10	6	D	6	6	H	SLM1DF02N1BC3	SLM1DF02N3BC3	

Configuration dimension chart

