

## JZF Series Angle Seat Valve

### Angle Seat Valve Numbering System for Order

1	2	3	4	5	6	7	8	9
Valve series	Mode of Operation	Actuator material	Actuator specifications	Seal material	Body material	Connection type	Orifice size	others
<b>JZF</b>	<b>1</b>	<b>G</b>	<b>1</b>	<b>T</b>	<b>3</b>	<b>C</b>	<b>10</b>	
	1=Single acting normally closed  2=Double-acting normally closed	G: Aluminum alloy  H: Stainless steel	Actuator material: Aluminum alloy 1=50 2=63 3=80 4=100 5=50 (recoil) 6=63 (recoil) 7=80 (recoil) 8=10 (recoil)  Actuator material: Stainless steel 1=50 2=70 3=100 4=125 5=50 (recoil) 6=70 (recoil) 7=100 (recoil) 8=125 (recoil)	T=Teflon (normally Temp)  R=RTFE (steam)	3=SS316 (normal)  4=SS304	screw thread: (normal G) C=3/8" D=1/2" E=3/4" G=1" H=1-1/4" J=1-1/2" K=2" L=2-1/2"  welded: WA=ASME BPE WB=DIN11850.1 WC=DIN11850.2 WD=DIN11850.3 WE=ISO1127 /4200 WF=SMS3008  Special made need to provide pipe size	10=10.0 15=15.0 20=20.0 25=25.0 32=32.0 40=40.0 50=50.0 65=65.0	N=NPT connections

Note: welded and socket welding Angle seat valve selection, please let us know the pipe diameter and wall thickness. According to different perform equipment quality, Angle seat valve (material for aluminium alloy) and divided into G series H series for stainless steel (material)

# Sanlixin Solenoid Valve

## JZF Series Angle Seat Valve

### Application industry

Beer beverage, disinfection equipment, rubber machinery, textile printing and dyeing, pharmaceutical, medical equipment, food processing, water treatment equipment, liquid filling equipment etc

### Technical parameters

Body material: SS316/SS304 Seal material: PTFE/RTFE

Orifice size: DN10-DN65

Connection type: screw thread (G、NPT) welded

Fluid medium: water、 gas or liquid, alcohol, oil, organic solvent, water vapor, weak acid or a weak base solution

Fluid temp:  $-10^{\circ}\text{C}$  to  $+180^{\circ}\text{C}$

Ambient temp:  $-10^{\circ}\text{C}$  to  $+60^{\circ}\text{C}$

viscosity: max 600CST

Control gas: air/neutral gas

Control pressure: 0.3 - 1MPa

Mounting: mounts in any position (Please select in explosive environment matching explosion-proof gas control valve)

### G series (Actuator material is Aluminum alloy)

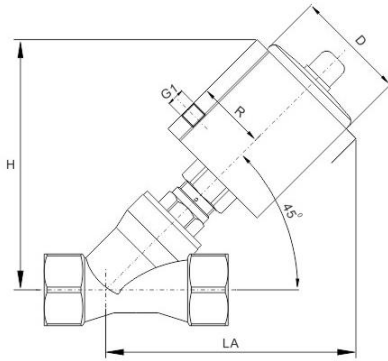


### H series (Actuator material is Stainless steel)



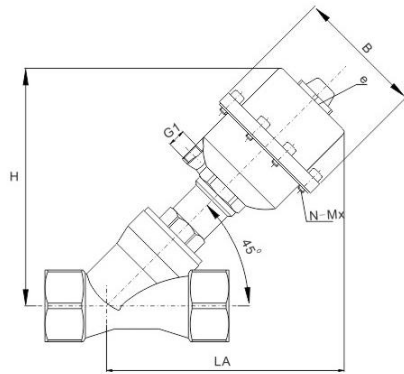
# JZF Series Angle Seat Valve

**Configuration dimension chart (mm)**



**G series**

size	Actuator specifications	D	R	G1	H/LA	
					screw thread	welded
DN10	50	61	38	G1/8"	127	128
DN15	50	61	38	G1/8"	127	127
DN20	50	61	38	G1/8"	130	130
DN25	50	61	38	G1/8"	136	136
	63	75	45	G1/8"	158	158
DN32	63	75	45	G1/8"	167	167
	80	94	54	G1/4"	185	185
DN40	63	75	45	G1/8"	174	174
	80	94	54	G1/4"	192	192
	100	115	64	G1/4"	212	212
DN50	63	75	45	G1/8"	185	185
	80	94	54	G1/4"	203	203
	100	115	64	G1/4"	222	222
DN65	80	94	54	G1/4"	224	224
	100	115	64	G1/4"	244	244



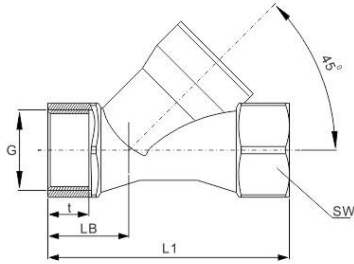
**H series**

size	Actuator specifications	ΦB	G1	E	N-Mx	H/LA	
						screw thread	welded
DN10	50	71	G1/8"	M16×1.5	6-M4	122	122
DN15	50	71	G1/8"	M16×1.5	6-M4	121	121
DN20	50	71	G1/8"	M16×1.5	6-M4	123	123
	70	94	G1/8"	M16×1.5	8-M5	141	141
DN25	50	71	G1/8"	M16×1.5	6-M4	130	130
	70	94	G1/8"	M16×1.5	8-M5	148	148
DN32	70	94	G1/8"	M16×1.5	8-M5	157	157
	100	132	G1/4"	M22×1.5	8-M6	192	192
DN40	70	94	G1/8"	M16×1.5	8-M5	164	164
	100	132	G1/4"	M22×1.5	8-M6	202	202
	125	160	G1/4"	M22×1.5	14-M6	228	228
DN50	70	94	G1/8"	M16×1.5	8-M5	174	174
	100	132	G1/4"	M22×1.5	8-M6	212	212
	125	160	G1/4"	M22×1.5	14-M6	288	288
DN65	100	132	G1/4"	M22×1.5	8-M6	239	239
	125	140	G1/4"	M22×1.5	14-M6	271	271

# Sanlixin Solenoid Valve

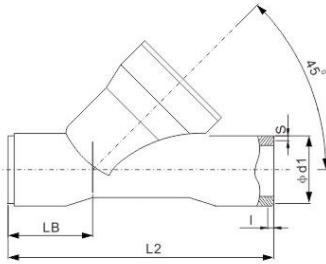
## JZF Series Angle Seat Valve

screw thread type Body size ( mm )



Valve body ( screw thread size )						BSP	NPT	NPTF	BSPT
DN	L1	LB	SW		G	t	t	t	t
10	74	25.5	22	6-kt	3/8"	10	10.6	11.7	10.1
15	74	25.5	25	6-kt	1/2"	11.5	15.4	15.4	13.2
20	84	29	31	6-kt	3/4"	14	14.3	15.9	14.5
25	100	33.5	39	6-kt	1"	15	17	19	16.8
32	112	36	50	6-kt	1-1/4"	18	17.5	19.5	19.1
40	126	41	56	6-kt	1-1/2"	18	17.5	19.5	19.1
50	146	46	68	6-kt	2"	22	18	19.9	23.4
65	196	61	85	6-kt	2-1/2"	25	24	30	26.7

welded type Body size ( mm )

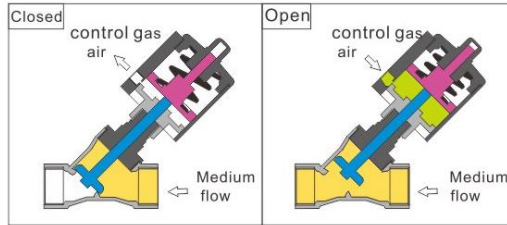
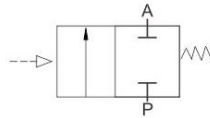


			ISO1127/4200			DIN11850.1			DIN11850.2			DIN11850.3		
DN	L2	LB	l	d1	s	l	d1	s	l	d1	s	l	d1	s
10	70	22	2	17.2	1.6	2	12	1	2	13	1.5	2	14	2
15	88	30	2	21.3	1.6	2	18	1	2	19	1.5	2	20	2
20	92	30	2.5	26.9	1.6	2.5	22	1	2.5	23	1.5	2.5	24	2
25	110	35	3	33.7	2	3	28	1	3	29	1.5	3	30	2
32	126	39	3	42.4	2	3	34	1	3	35	1.5	3	36	2
40	144	46	3	48.3	2	3	40	1	3	41	1.5	3	42	2
50	166	48	3	60.3	2	3	52	1	3	53	1.5	3	54	2
65	208	60	3	76.1	2				3	70	2			

			SMS 3008			ASME BPE			ORIFICE
DN	L2	LB	l	d1	s	l	d1	s	
15	70	22	2.5	12	1	2.5	12.7	1.65	DN10
20	88	30	2	18	1	2	19.05	1.65	DN15
25	92	30	2.5	25	1.2	2.5	25.4	1.65	DN20
40	126	39	3	38	1.2	3	38.1	1.65	DN32
50	144	46	3	51	1.2	3	50.8	1.65	DN40
65	166	48	3	63.5	1.6	3	63.5	1.65	DN50
80	208	60	3	76.1	1.6	3	76.2	1.65	DN65

# JZF Series Angle Seat Valve

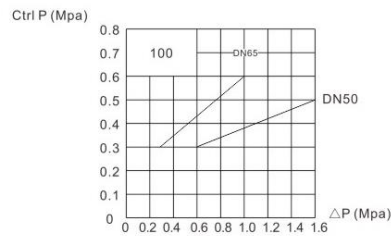
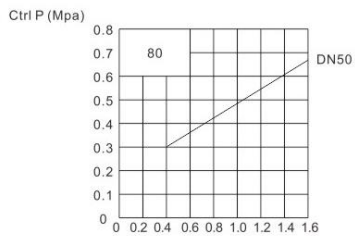
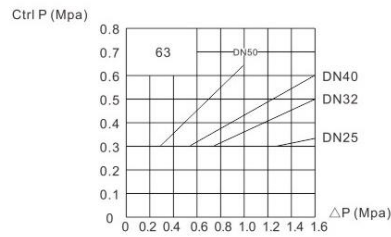
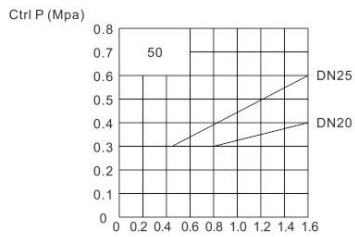
## G series Single acting normally closed



Orifice size (mm)	KV (m <sup>3</sup> /h)	Pipe size	Actuator	Min working pressure (MPa)	Max working pressure (Mpa)	Min control pressure (Mpa)	code	weight (kg)
DN10	4.7	3/8"	50	0	1.6	≥ 0.3	JZF1G1T3C10	0.8
DN15	4.7	1/2"	50	0	1.6	≥ 0.3	JZF1G1T3D15	0.90
DN20	9.5	3/4"	50	0	1.6	0.3-0.4	JZF1G1T3E20	0.95
DN25	18.1	1"	50	0	1.6	0.3-0.55	JZF1G1T3G25	1.52
			63	0	1.6	0.3-0.4	JZF1G2T3G25	1.76
DN32	23.1	1-1/4"	63	0	1.6	0.3-0.55	JZF1G2T3H32	2.54
DN40	32.9	1-1/2"	63	0	1.6	0.3-0.65	JZF1G2T3J40	2.95
DN50	52.8	2"	63	0	1.0	0.3-0.65	JZF1G2T3K50	3.68
			80	0	1.6	0.3-0.66	JZF1G3T3K50	4.85
			100	0	1.6	0.3-0.5	JZF1G4T3K50	5.36
DN65	82	2-1/2"	100	0	1.0	0.3-0.6	JZF1G4T3L65	9.50

Note: 1, all the technical parameters of welded Angle seat valve and screw-type Angle seat valve, connection size refer to welded body size

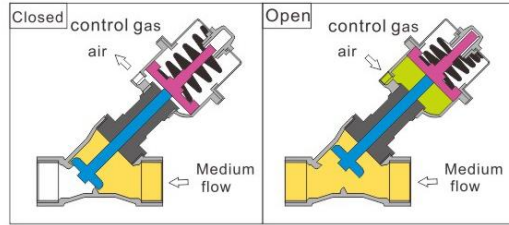
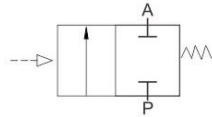
2, if the medium is steam, pressure will be subject to the temperature, max medium temperature is 180 °C



# Sanlixin Solenoid Valve

## JZF Series Angle Seat Valve

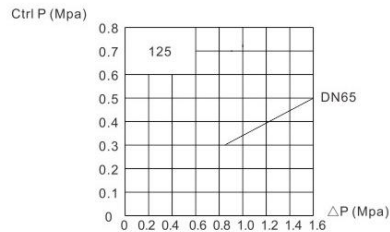
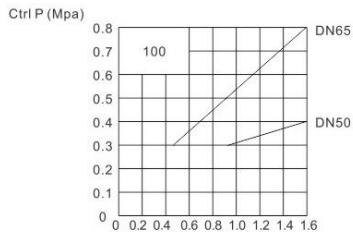
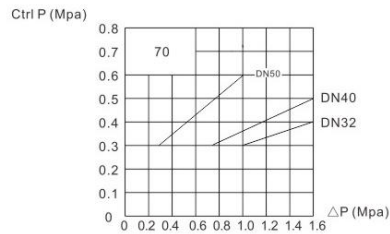
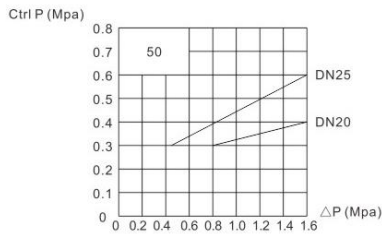
H series Single acting normally closed



Orifice size (mm)	KV (m <sup>3</sup> /h)	Pipe size	Actuator	Min working pressure (MPa)	Max working pressure (Mpa)	Min control pressure (Mpa)	code	weight (kg)
DN10	4.7	3/8"	50	0	1.6	≥0.3	JZF1H1T3C10	0.8
DN15	4.7	1/2"	50	0	1.6	≥0.3	JZF1H1T3D15	0.95
DN20	9.5	3/4"	50	0	1.6	0.3-0.4	JZF1H1T3E20	1.00
DN25	18.1	1"	50	0	1.6	0.3-0.6	JZF1H1T3G25	1.33
			70	0	1.6	≥0.3	JZF1H2T3G25	1.85
DN32	23.1	1-1/4"	70	0	1.6	0.3-0.4	JZF1H2T3H32	2.15
			100	0	1.6	≥0.3	JZF1H3T3H32	3.95
DN40	32.9	1-1/2"	70	0	1.6	0.3-0.5	JZF1H2T3J40	3.02
			100	0	1.6	≥0.3	JZF1H3T3J40	4.30
DN50	52.8	2"	70	0	1.0	0.3-0.6	JZF1H2T3K50	4.00
			100	0	1.6	0.3-0.4	JZF1H3T3K50	5.00
			125	0	1.6	≥0.3	JZF1H4T3K50	7.18
DN65	82	2-1/2"	100	0	1.6	0.3-0.8	JZF1H3T3L65	7.39
			125	0	1.6	0.3-0.5	JZF1H4T3L65	10.00

Note: 1, all the technical parameters of welded Angle seat valve and screw-type Angle seat valve, connection size refer to welded body size

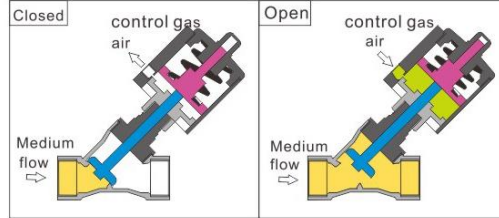
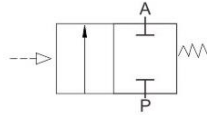
2, if the medium is steam, pressure will be subject to the temperature, max medium temperature is 180 °C



# JZF Series Angle Seat Valve

## G series Single acting normally closed

(Water hammer)



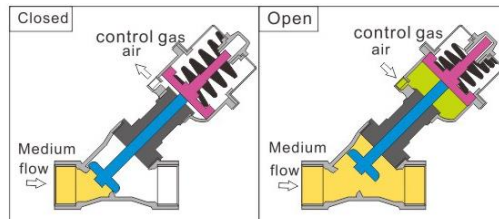
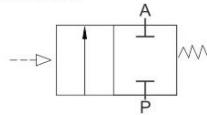
Orifice size (mm)	KV (m <sup>3</sup> /h)	Pipe size	Actuator	Min working pressure (MPa)	Max working pressure (Mpa)	Min control pressure(Mpa)	code	weight (kg)
DN10	4.7	3/8"	50	0	1.6	0.45	JZF1G5T3C10	0.8
DN15	4.7	1/2"	50	0	1.6	0.45	JZF1G5T3D15	0.90
DN20	9.5	3/4"	50	0	1.0	0.45	JZF1G5T3E20	0.95
DN25	18.1	1"	63	0	0.8	0.45	JZF1G6T3G25	1.76
DN32	23.1	1-1/4"	80	0	1.1	0.4	JZF1G7T3H32	2.54
DN40	32.9	1-1/2"	80	0	0.8	0.4	JZF1G7T3J40	3.23
			100	0	1.6	0.4	JZF1G8T3J40	3.74
DN50	52.8	2"	100	0	0.9	0.4	JZF1G8T3K50	5.36

Note: 1, all the technical parameters of welded Angle seat valve and screw-type Angle seat valve, connection size refer to welded body size

2, if the medium is steam, pressure will be subject to the temperature, max medium temperature is 180 °C

## H series Single acting normally closed

(Water hammer)



Orifice size (mm)	KV (m <sup>3</sup> /h)	Pipe size	Actuator	Min working pressure (MPa)	Max working pressure (Mpa)	Min control pressure(Mpa)	code	weight (kg)
DN10	4.7	3/8"	50	0	1.6	0.4	JZF1H5T3C10	0.84
DN15	4.7	1/2"	50	0	1.6	0.4	JZF1H5T3D15	0.95
DN20	9.5	3/4"	50	0	1.0	0.4	JZF1H5T3E20	1.00
			70	0	1.6	0.4	JZF1H6T3E20	1.52
DN25	18.1	1"	70	0	1.4	0.4	JZF1H6T3G25	1.85
DN32	23.1	1-1/4"	70	0	0.7	0.4	JZF1H6T3H32	2.15
			100	0	1.6	0.4	JZF1H7T3H32	3.95
DN40	32.9	1-1/2"	100	0	1.6	0.4	JZF1H7T3J40	4.30
			125	0	1.6	0.45	JZF1H8T3J40	6.38
DN50	52.8	2"	100	0	0.9	0.4	JZF1H7T3K50	5.00
			125	0	1.6	0.45	JZF1H8T3K50	7.18
DN65	82	2-1/2"	125	0	0.8	0.45	JZF1H8T3L65	10.00

Note: 1, all the technical parameters of welded Angle seat valve and screw-type Angle seat valve, connection size refer to welded body size

2, if the medium is steam, pressure will be subject to the temperature, max medium temperature is 180 °C